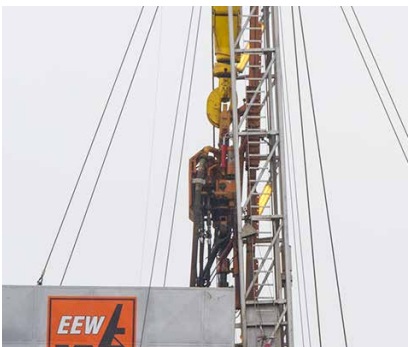


Rig T48

Rig T48 is universally applicable for the execution of medium-heavy drilling and workover jobs. With a hook load of 220 tons, it's suitable for average depths of 3,500 m in deep drilling applications and 5,000 m in workover operations. The rig is equipped with a topdrive.

Type	S&S 1000 SD
Year	2009
Max. hook load	220 t
Mast height	37.80 m
Output	795 kW



Technical data Rig T48

Drawworks

Type	S&S - CE1000SD
Drum	Single drum
Drilling line diameter	1 1/4"
Brake	Band brake 44x11
Auxiliary brake	Eaton WCBD-236
Engine	Twice CAT C15
Output	795 kW / 1,080 PS

Substructure

Type	S&S
Total height	6.10 m
Height below rotary beam	5.25 m
Setback load rotary table	1,961 kN
Setback load monkey board	1,471 kN
Setback capacity 3 1/2" tubing	4,500 m
Setback capacity 5" tubing	3,500 m

Rotary table

Type	American Block RK275
Static load	4.452 kN
Rotary table clearance	27 1/2"

Additional equipment (variable)

Mud pumps (3 times)

Type	Oilwell - A 1100 PT Triplex
Engine	MTU 16V2000
Output	899 kW / 1,222 PS
Pump performance	2.606 l/min with 7 1/2" plunger
Max. pressure	345 bar with 4 1/2" plunger

Mud system

Tanks	4 times, modular setup
Max. active volume	150 m ³
Weiteres	Twice hopper 3 times shaker Twice 10" desander 14 times 4" desilter

Mast

Type	S&S DTS-01000-124-440
Model	Telescope
Mast height	37.80 m
No. of lines	8 times
Nominal load	200 tons
Peak load	220 tons

Top drive

Type	Tesco 250 HXI 700
Max. torque	43,386 Nm
Continuous torque	32,540 Nm
Max. rpm	200 rpm
Engine	Cat C18
Output	522 kW / 710 PS

Travelling block

Type	McKissick - 5x36RJ250
Hook load	227 tons

Swivel

Type	Upetrom CH-200
Capacity	200 tons

Well control

Preventer	Cameron 13 5/8" 5,000 PSI annular + double ram type
Closing unit	according to API for 13 5/8" BOP stack

Further equipment

<ul style="list-style-type: none">• 2 generators (780 and 500 kVA)• BOP handling• Forklift truck• Hook load limiter• Crown safety device• Electronic drilling data acquisition• Automatic driller
